



MODA - ML

(www.moda-ml.org)

IMPLEMENTATION GUIDE
TRANSACTION "TEXTILES DESPATCH REQUEST"

Process: Fabric supply
Activity: Despatch of fabrics

Version: v2003-1

Date of release: 31/12/2002

Document code: OF51-005

XML Schema repository: <http://www.moda-ml.net/moda-ml/repository/schema/v2003-1/default.asp>

Guides repository: <http://www.moda-ml.org/moda-ml/repository/guide/v2003-1/EN/default.asp>

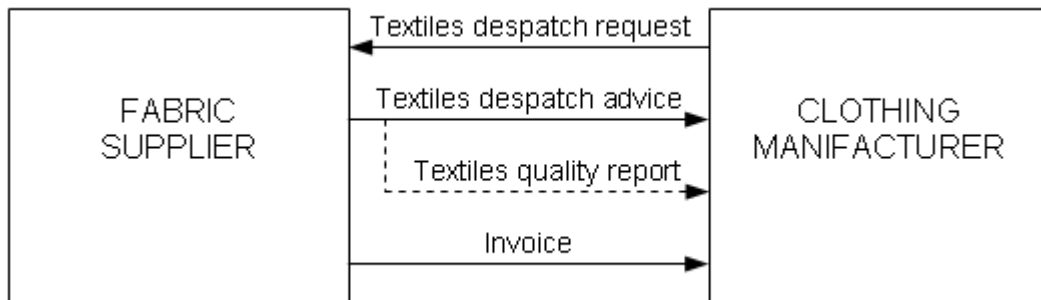
Guide filename: OF51-005-MODA-ML-TextilesDespatchRequest.pdf

1. Scope

The present guide has been issued by MODA-ML (an IST-2000 EUTIST-AMI Project) to assist the companies of the Textile-Clothing sector in the implementation of the standard XML document type "TEXTILES DESPATCH REQUEST", providing all the instruction required for its use in any context of e-commerce between Apparel Manufactures and Fabric Suppliers.

The XML document class here described can be used to support the transaction "textiles despatch request" in the activity "Despatch of fabric" of the process "Fabric supply".

All the rules required for the construction and validation of the document are embedded into the specific XML-Schema, which is detailed in section 3.



2. General structure of XML document

All the business data that can be exchanged through this class of documents are shown in the following "document structure", that provides a simplified vision of the Schema.

In particular:

- the two numbers following each element define its "cardinality" (minimum and maximum number of occurrences); the minimum equal zero indicates that the element is optional, the minimum greater than zero indicates that is mandatory;
- the bold character denotes the complex elements (aggregates of simple elements) that were built by MODA-ML for the sake of functionality and re-usability of some complex informations sets. The child elements in each parent element are easily spotted as "indented";
- the symbol "@" denotes an attribute of the preceding element; here "the usage indicator (optional, required, ...) is shown in square brackets.

Structure

TEXDesRequest

@TRtype [Optional] [Default= STD]

@msgfunction [Optional] [Default= OR]

TRheader 1-1

msgN 1-1

msgDate 1-1

refDoc 0-9

buyer 1-1

supplier 1-1

thirdParty 0-5

note 0-5

shipInfo 0-1

transInfo 0-5

delEffectiveDate 0-1

packages 0-5

piecePack 0-1

- *choose* -

piecePackText 1-1

- *or* -

pieceInnWrap1 1-1

pieceInnWrap2 0-1

pieceOutWrap 0-1

- *end choose* -

TRbody 1-1

TRitem 1-999

3. Use of the document

3.1 Generalities

The message is issued by the Apparel Manufacturer to plan the delivery of the fabric pieces that are in the "ready for despatch" status (see the document "Textiles Order Status").

This document can be used:

- as a standard despatch request
- as a despatch request that, at the same time, cancels a previous request referenced there in

Each document item must correspond with a well defined fabric article (article + pattern + color) and for each item is possible to reference the Order line that is delivered.

3.2 Detailed description of document elements

TEXDesRequest

@TRtype [Optional] [Default= STD]

@msgfunction [Optional] [Default= OR]

TRheader 1-1

msgN 1-1

msgDate 1-1

refDoc 0-9

@docType [Required]

docID 1-1

docDate 0-1

season 0-1

itemID 0-1

buyer 1-1

@logo [Optional]

id 1-1

@numberingOrg [Optional]

legalName 0-1

dept 0-1

person 0-1

@email [Optional]

street 0-1

city 0-1

subCountry 0-1

country 0-1

postCode 0-1

supplier 1-1

@logo [Optional]

id 1-1

@numberingOrg [Optional]

legalName 0-1

dept 0-1

person 0-1

@email [Optional]

street 0-1

city 0-1

subCountry 0-1

country 0-1

postCode 0-1

thirdParty 0-5

@role [Required]

id 1-1

@numberingOrg [Optional]

legalName 0-1

dept 0-1

person 0-1

@email [Optional]

street 0-1

city 0-1

subCountry 0-1

country 0-1

postCode 0-1
note 0-5

| | |
|---|---|
| TEXDesRequest | |
| @TRtype [Optional] [Default= STD] | TR type type of Despatch request - base type: string, cod. table: NT9, (XPath: TEXDesRequest/@TRtype) |
| @msgfunction [Optional] [Default=OR] | message function function performed by the present message with regards to the transmission - base type: string, cod. table: NT18, (XPath: TEXDesRequest/@msgfunction) |
| TRheader 1-1 | TR header header of the TEXTILE DESPATCH REQUEST - - note: <i>the attribute "logo" should be used only in conjunction with Buyer</i> (XPath: TEXDesRequest/TRheader) |
| msgN 1-1 | message identifier identification number given to the message by its issuer - base type: string, max length: 25, (XPath: TEXDesRequest/TRheader/msgN) |
| msgDate 1-1 | message date date of issue of the present message (xml document) - base type: date, (XPath: TEXDesRequest/TRheader/msgDate) |
| refDoc 0-9 | reference document details identification of a document and of an item thereof, to which the message makes reference - (XPath: TEXDesRequest/TRheader/refDoc) |
| @docType [Required] | document type code type or class to which the document belongs - base type: string, cod. table: T21, (XPath: TEXDesRequest/TRheader/refDoc/@docType) |
| docID 1-1 | document identifier identification number given to the referenced document by its issuer - base type: string, max length: 25, (XPath: TEXDesRequest/TRheader/refDoc/docID) |
| docDate 0-1 | document date date of issue of the referenced document - base type: date, (XPath: TEXDesRequest/TRheader/refDoc/docDate) |
| season 0-1 | season identifier sale season; represented as a) season (Spring/Summer=1; Autumn/Winter=2) + b) year - base type: string, length: 5, (XPath: TEXDesRequest/TRheader/refDoc/season) |
| itemID 0-1 | item number number of the line/item of the referenced document - base type: positiveInteger, min inclusive: 1, max inclusive: 9999, (XPath: TEXDesRequest/TRheader/refDoc/itemID) |

| | |
|---------------------------------|--|
| buyer 1-1 | Buyer details of the Buyer - base type: Nad, (XPath: TEXDesRequest/TRheader/buyer) |
| <i>@logo [Optional]</i> | party logo company logo (URL of the image jpeg or gif). It is recommended that the width of the image does not exceed 640 pixel. - base type: string, max length: 255, (XPath: TEXDesRequest/TRheader/buyer/@logo) |
| id 1-1 | Party identifier primary identification code of the Party - base type: string, max length: 15, (XPath: TEXDesRequest/TRheader/buyer/id) |
| <i>@numberingOrg [Optional]</i> | numbering organisation code Party who has created or owns the coding or numbering system - base type: string, cod. table: NT6, (XPath: TEXDesRequest/TRheader/buyer/id/@numberingOrg) |
| legalName 0-1 | Legal name legal name of the Party - base type: string, max length: 80, (XPath: TEXDesRequest/TRheader/buyer/legalName) |
| dept 0-1 | department identifier name or code of the department within the Party - base type: string, max length: 40, (XPath: TEXDesRequest/TRheader/buyer/dept) |
| person 0-1 | contact person name name of the contact person within the Party - base type: string, max length: 40, (XPath: TEXDesRequest/TRheader/buyer/person) |
| <i>@email [Optional]</i> | e-mail electronic mail address - base type: string, max length: 80, (XPath: TEXDesRequest/TRheader/buyer/person/@email) |
| street 0-1 | street and building identifier street and building number identifying the location of the Party - base type: string, max length: 80, (XPath: TEXDesRequest/TRheader/buyer/street) |
| city 0-1 | city name name of the city (town, village) where the Party is located - base type: string, max length: 40, (XPath: TEXDesRequest/TRheader/buyer/city) |
| subCountry 0-1 | sub-country code short name or code of the sub-country entity - base type: string, max length: 9, (XPath: TEXDesRequest/TRheader/buyer/subCountry) |
| country 0-1 | country code code of the nation where the Party is located - base type: string, cod. table: T10, (XPath: TEXDesRequest/TRheader/buyer/country) |
| postCode 0-1 | postal zone code code defining the postal zone - base type: string, max length: 10, |

| | |
|--------------------------|---|
| | (XPath: TEXDesRequest/TRheader/buyer/postCode) |
| supplier 1-1 | Supplier details of the Supplier - base type: Nad, (XPath: TEXDesRequest/TRheader/supplier) |
| @logo [Optional] | party logo company logo (URL of the image jpeg or gif). It is recommended that the width of the image does not exceed 640 pixel. - base type: string, max length: 255, (XPath: TEXDesRequest/TRheader/supplier/@logo) |
| id 1-1 | Party identifier primary identification code of the Party - base type: string, max length: 15, (XPath: TEXDesRequest/TRheader/supplier/id) |
| @numberingOrg [Optional] | numbering organisation code Party who has created or owns the coding or numbering system - base type: string, cod. table: NT6, (XPath: TEXDesRequest/TRheader/supplier/id/@numberingOrg) |
| legalName 0-1 | Legal name legal name of the Party - base type: string, max length: 80, (XPath: TEXDesRequest/TRheader/supplier/legalName) |
| dept 0-1 | department identifier name or code of the department within the Party - base type: string, max length: 40, (XPath: TEXDesRequest/TRheader/supplier/dept) |
| person 0-1 | contact person name name of the contact person within the Party - base type: string, max length: 40, (XPath: TEXDesRequest/TRheader/supplier/person) |
| @email [Optional] | e-mail electronic mail address - base type: string, max length: 80, (XPath: TEXDesRequest/TRheader/supplier/person/@email) |
| street 0-1 | street and building identifier street and building number identifying the location of the Party - base type: string, max length: 80, (XPath: TEXDesRequest/TRheader/supplier/street) |
| city 0-1 | city name name of the city (town, village) where the Party is located - base type: string, max length: 40, (XPath: TEXDesRequest/TRheader/supplier/city) |
| subCountry 0-1 | sub-country code short name or code of the sub-country entity - base type: string, max length: 9, (XPath: TEXDesRequest/TRheader/supplier/subCountry) |
| country 0-1 | country code code of the nation where the Party is located - base type: string, cod. table: T10, (XPath: TEXDesRequest/TRheader/supplier/country) |
| postCode 0-1 | postal zone code code defining the postal zone |

| | |
|---------------------------------|--|
| | - base type: string, max length: 10, (XPath: TEXDesRequest/TRheader/supplier/postCode) |
| thirdParty 0-5 | Third Party details of the Third Party, different from Buyer or Supplier - base type: Nad, - note: <i>here the Consignee when different from the Client must be specified</i> (XPath: TEXDesRequest/TRheader/thirdParty) |
| <i>@role [Required]</i> | Party code Third Party qualifier - base type: string, cod. table: NT2, (XPath: TEXDesRequest/TRheader/thirdParty/@role) |
| id 1-1 | Party identifier primary identification code of the Party - base type: string, max length: 15, (XPath: TEXDesRequest/TRheader/thirdParty/id) |
| <i>@numberingOrg [Optional]</i> | numbering organisation code Party who has created or owns the coding or numbering system - base type: string, cod. table: NT6, (XPath: TEXDesRequest/TRheader/thirdParty/id/@numberingOrg) |
| legalName 0-1 | Legal name legal name of the Party - base type: string, max length: 80, (XPath: TEXDesRequest/TRheader/thirdParty/legalName) |
| dept 0-1 | department identifier name or code of the department within the Party - base type: string, max length: 40, (XPath: TEXDesRequest/TRheader/thirdParty/dept) |
| person 0-1 | contact person name name of the contact person within the Party - base type: string, max length: 40, (XPath: TEXDesRequest/TRheader/thirdParty/person) |
| <i>@email [Optional]</i> | e-mail electronic mail address - base type: string, max length: 80, (XPath: TEXDesRequest/TRheader/thirdParty/person/@email) |
| street 0-1 | street and building identifier street and building number identifying the location of the Party - base type: string, max length: 80, (XPath: TEXDesRequest/TRheader/thirdParty/street) |
| city 0-1 | city name name of the city (town, village) where the Party is located - base type: string, max length: 40, (XPath: TEXDesRequest/TRheader/thirdParty/city) |
| subCountry 0-1 | sub-country code short name or code of the sub-country entity - base type: string, max length: 9, (XPath: TEXDesRequest/TRheader/thirdParty/subCountry) |
| country 0-1 | country code code of the nation where the Party is located - base type: string, cod. table: T10, (XPath: TEXDesRequest/TRheader/thirdParty/country) |
| postCode 0-1 | postal zone code |

| | |
|----------|---|
| | code defining the postal zone - base type: string, max length: 10, (XPath: TEXDesRequest/TRheader/thirdParty/postCode) |
| note 0-5 | free text free text note - base type: string, max length: 350, (XPath: TEXDesRequest/TRheader/note) |

shipInfo 0-1

transInfo 0-5

@transReason [Optional]

transMode 1-1

carrier 0-1

deliveryPlace 0-1

grossWeight 0-1

@um [Required]

netWeight 0-1

@um [Required]

delEffectiveDate 0-1

packages 0-5

@packageReturn [Optional] [Default= 0]

@packageLevel [Optional]

- choose -

packageText 1-1

- or -

package 1-1

- end choose -

packageQty 0-1

packageN 0-999

@numberingOrg [Optional] [Default= FO]

| | |
|-------------------------|---|
| shipInfo 0-1 | Shipping informations miscellaneous informations on transport and packing, referred either to the whole document or to the single item - - note: <i>here must be specified the infos valid for the whole document</i> (XPath: TEXDesRequest/shipInfo) |
| transInfo 0-5 | Transport informations details of transport: mode, carrier and delivery place - - note: <i>this data group can be iterated for each transport leg</i> (XPath: TEXDesRequest/shipInfo/transInfo) |
| @transReason [Optional] | reason for transport code reason for the transport - base type: string, cod. table: NT11, (XPath: TEXDesRequest/shipInfo/transInfo/@transReason) |
| transMode 1-1 | mode of transport code way of transport, in general or referred to the specified leg - base type: string, cod. table: T8, (XPath: TEXDesRequest/shipInfo/transInfo/transMode) |
| carrier 0-1 | carrier identifier identification of the transport carrier - base type: string, max length: 40, |

| | |
|---------------------------------------|---|
| | (XPath: TEXDesRequest/shipInfo/transInfo/carrier) |
| deliveryPlace 0-1 | place of delivery name place of delivery of goods, ultimate or related to a given leg - base type: string, max length: 40, (XPath: TEXDesRequest/shipInfo/transInfo/deliveryPlace) |
| grossWeight 0-1 | gross weight measure the gross weight of the overall goods supply, declared for transport or customs purpose - base type: decimal, min inclusive: 0, fraction digits: 2, (XPath: TEXDesRequest/shipInfo/transInfo/grossWeight) |
| @um [Required] | unit of measure code specification of the unit of measure - base type: string, cod. table: NT7, (XPath: TEXDesRequest/shipInfo/transInfo/grossWeight/@um) |
| netWeight 0-1 | net weight measure the net weight of the overall goods supply, declared for transport or customs purpose - base type: decimal, min inclusive: 0, fraction digits: 2, (XPath: TEXDesRequest/shipInfo/transInfo/netWeight) |
| @um [Required] | unit of measure code specification of the unit of measure - base type: string, cod. table: NT7, (XPath: TEXDesRequest/shipInfo/transInfo/netWeight/@um) |
| delEffectiveDate 0-1 | goods delivered date effective date of delivery of goods (declared in Despatch) - base type: date, (XPath: TEXDesRequest/shipInfo/delEffectiveDate) |
| packages 0-5 | Transport packages details details of the transport packages - - note: <i>this data group must be iterated for each type of package</i> (XPath: TEXDesRequest/shipInfo/packages) |
| @packageReturn [Optional] [Default=0] | package return indicator specifies if the transport packages have to be returned by the Consignee - base type: boolean, (XPath: TEXDesRequest/shipInfo/packages/@packageReturn) |
| @packageLevel [Optional] | package level identifier level used to indicate the hierarchical structure of the packages (from outer to inner levels) - base type: positiveInteger, total digits: 1, - nota: <i>the hierarchic indication of the packages stucture must either be used for all packages or not be used</i> (XPath: TEXDesRequest/shipInfo/packages/@packageLevel) |
| packageText 1-1 | transport package text free text specifying the type of package used for transport and delivery - base type: string, max length: 40, (XPath: TEXDesRequest/shipInfo/packages/packageText) |
| package 1-1 | transport package code code specifying the type of package used for transport and delivery - base type: string, cod. table: T11, (XPath: TEXDesRequest/shipInfo/packages/package) |
| packageQty 0-1 | transport package quantity number of the transport packages in the named supply |

| | |
|--|--|
| | - base type: positiveInteger, min inclusive: 1, max inclusive: 999, - note: <i>total for the type of package</i> (XPath: TEXDesRequest/shipInfo/packages/packageQty) |
| packageN 0-999 | package number serial number used to identify a transport package - base type: string, max length: 15, - note: <i>here the serial no.s of the packages can be identified</i> (XPath: TEXDesRequest/shipInfo/packages/packageN) |
| @numberingOrg [Optional] [Default=FO] | numbering organisation code Party who has created or owns the coding or numbering system - base type: string, cod. table: NT6, (XPath: TEXDesRequest/shipInfo/packages/packageN/@numberingOrg) |

piecePack 0-1

- choose -
- piecePackText 1-1
- or -
- pieceInnWrap1 1-1
- pieceInnWrap2 0-1
- pieceOutWrap 0-1
- end choose -

| | |
|----------------------|---|
| piecePack 0-1 | Fabric piece packing details type of wrapping or packing of the fabric pieces - (XPath: TEXDesRequest/piecePack) |
| piecePackText 1-1 | fabric piece packing text free text specifying the type of wrapping or packing used for the fabric piece - base type: string, max length: 40, (XPath: TEXDesRequest/piecePack/piecePackText) |
| pieceInnWrap1 1-1 | fabric piece inner packing 1 code code specifying the type of inner wrapping/packing used for the fabric piece - base type: string, cod. table: T4, (XPath: TEXDesRequest/piecePack/pieceInnWrap1) |
| pieceInnWrap2 0-1 | fabric piece inner packing 2, code code sub-specifying the type of inner wrapping/packing used for the fabric piece - base type: string, cod. table: T5, (XPath: TEXDesRequest/piecePack/pieceInnWrap2) |
| pieceOutWrap 0-1 | fabric piece outer packing, code code specifying the type of outer wrapping or packing used for the fabric piece - base type: string, cod. table: T6, (XPath: TEXDesRequest/piecePack/pieceOutWrap) |

TRbody 1-1

TRitem 1-999

@extinction [Optional] [Default= 0]

lineN 1-1

refDoc 0-1

@docType [Required]

docID 1-1

docDate 0-1

season 0-1

itemID 0-1

texCode 1-2

@numberingOrg [Required]

art 1-1

pattern 0-1

color 0-1

added 0-1

qty 1-2

@um [Required]

thirdParty 0-1

@role [Required]

id 1-1

@numberingOrg [Optional]

legalName 0-1

dept 0-1

person 0-1

@email [Optional]

street 0-1

city 0-1

subCountry 0-1

country 0-1

postCode 0-1

shipInfo 0-1

transInfo 0-5

@transReason [Optional]

transMode 1-1

carrier 0-1

deliveryPlace 0-1

grossWeight 0-1

@um [Required]

netWeight 0-1

@um [Required]

delEffectiveDate 0-1

packages 0-5

@packageReturn [Optional] [Default= 0]

@packageLevel [Optional]

- choose -

packageText 1-1

- or -

package 1-1

- end choose -

packageQty 0-1

packageN 0-999

@numberingOrg [Optional] [Default= FO]

piecePack 0-1

- choose -

piecePackText 1-1

- or -

pieceInnWrap1 1-1
 pieceInnWrap2 0-1
 pieceOutWrap 0-1
 - end choose -
 note 0-1

| | |
|--|--|
| TRbody 1-1 | TR body body of the document "Textiles Despatch Request" - (XPath: TEXDesRequest/TRbody) |
| TRitem 1-999 | TR item line item of the message "TEXTILE DESPATCH REQUEST" - (XPath: TEXDesRequest/TRbody/TRitem) |
| <i>@extinction</i> [Optional] [Default= 0] | line extinction indicator specified if the referred position (document/line) in is cleared (exhausted) - base type: boolean, (XPath: TEXDesRequest/TRbody/TRitem/@extinction) |
| lineN 1-1 | line number number of the line item of the present message - base type: positiveInteger, min inclusive: 1, max inclusive: 9999, (XPath: TEXDesRequest/TRbody/TRitem/lineN) |
| refDoc 0-1 | reference document details identification of a document and of an item thereof, to which the message makes reference - - note: <i>here the number of the order line executed can be identified</i> (XPath: TEXDesRequest/TRbody/TRitem/refDoc) |
| <i>@docType</i> [Required] | document type code type or class to which the document belongs - base type: string, cod. table: T21, (XPath: TEXDesRequest/TRbody/TRitem/refDoc/@docType) |
| docID 1-1 | document identifier identification number given to the referenced document by its issuer - base type: string, max length: 25, (XPath: TEXDesRequest/TRbody/TRitem/refDoc/docID) |
| docDate 0-1 | document date date of issue of the referenced document - base type: date, (XPath: TEXDesRequest/TRbody/TRitem/refDoc/docDate) |
| season 0-1 | season identifier sale season; represented as a) season (Spring/Summer=1; Autumn/Winter=2) + b) year - base type: string, length: 5, (XPath: TEXDesRequest/TRbody/TRitem/refDoc/season) |
| itemID 0-1 | item number number of the line/item of the referenced document - base type: positiveInteger, min inclusive: 1, max inclusive: 9999, (XPath: TEXDesRequest/TRbody/TRitem/refDoc/itemID) |
| texCode 1-2 | Textiles product code full codification of the textile product - (XPath: TEXDesRequest/TRbody/TRitem/texCode) |

| | |
|---|--|
| @numberingOrg <i>[Required]</i> | numbering organisation code Party who has created or owns the coding or numbering system - base type: string, cod. table: NT6, (XPath: TEXDesRequest/TRbody/TRitem/texCode/@numberingOrg) |
| art 1-1 | article identifier article number of the product - base type: string, max length: 25, - note: <i>can be used either for the base-article (excluding pattern/colour) or for the SKU</i> (XPath: TEXDesRequest/TRbody/TRitem/texCode/art) |
| pattern 0-1 | article's pattern identifier pattern/design number of the product, when not included in the article code - base type: string, max length: 15, (XPath: TEXDesRequest/TRbody/TRitem/texCode/pattern) |
| color 0-1 | article's colour identifier colour number of the product, when not included in the article code - base type: string, max length: 15, (XPath: TEXDesRequest/TRbody/TRitem/texCode/color) |
| added 0-1 | article's additional identifier additional code of the product (complementing the formers) - base type: string, max length: 15, (XPath: TEXDesRequest/TRbody/TRitem/texCode/added) |
| qty 1-2 | item quantity net quantity of the article or object specified in the message line, qualified by the function of the document (ordering, delivering, ..) - base type: decimal, min inclusive: 0, fraction digits: 2, (XPath: TEXDesRequest/TRbody/TRitem/qty) |
| @um <i>[Required]</i> | unit of measure code specification of the unit of measure - base type: string, cod. table: NT7, (XPath: TEXDesRequest/TRbody/TRitem/qty/@um) |
| thirdParty 0-1 | Third Party details of the Third Party, different from Buyer or Supplier - base type: Nad, - note: <i>here the Consignee of the item, different from the one in header, must be specified</i> (XPath: TEXDesRequest/TRbody/TRitem/thirdParty) |
| @role <i>[Required]</i> | Party code Third Party qualifier - base type: string, cod. table: NT2, (XPath: TEXDesRequest/TRbody/TRitem/thirdParty/@role) |
| id 1-1 | Party identifier primary identification code of the Party - base type: string, max length: 15, (XPath: TEXDesRequest/TRbody/TRitem/thirdParty/id) |
| @numberingOrg <i>[Optional]</i> | numbering organisation code Party who has created or owns the coding or numbering system - base type: string, cod. table: NT6, (XPath: TEXDesRequest/TRbody/TRitem/thirdParty/id/@numberingOrg) |
| legalName 0-1 | Legal name legal name of the Party - base type: string, max length: 80, (XPath: TEXDesRequest/TRbody/TRitem/thirdParty/legalName) |
| dept 0-1 | department identifier |

| | |
|-------------------------|---|
| | <p>name or code of the department within the Party</p> <p>- base type: string, max length: 40, (XPath: TEXDesRequest/TRbody/TRitem/thirdParty/dept)</p> |
| person 0-1 | <p>contact person name</p> <p>name of the contact person within the Party</p> <p>- base type: string, max length: 40, (XPath: TEXDesRequest/TRbody/TRitem/thirdParty/person)</p> |
| @email [Optional] | <p>e-mail</p> <p>electronic mail address</p> <p>- base type: string, max length: 80, (XPath: TEXDesRequest/TRbody/TRitem/thirdParty/person/@email)</p> |
| street 0-1 | <p>street and building identifier</p> <p>street and building number identifying the location of the Party</p> <p>- base type: string, max length: 80, (XPath: TEXDesRequest/TRbody/TRitem/thirdParty/street)</p> |
| city 0-1 | <p>city name</p> <p>name of the city (town, village) where the Party is located</p> <p>- base type: string, max length: 40, (XPath: TEXDesRequest/TRbody/TRitem/thirdParty/city)</p> |
| subCountry 0-1 | <p>sub-country code</p> <p>short name or code of the sub-country entity</p> <p>- base type: string, max length: 9, (XPath: TEXDesRequest/TRbody/TRitem/thirdParty/subCountry)</p> |
| country 0-1 | <p>country code</p> <p>code of the nation where the Party is located</p> <p>- base type: string, cod. table: T10, (XPath: TEXDesRequest/TRbody/TRitem/thirdParty/country)</p> |
| postCode 0-1 | <p>postal zone code</p> <p>code defining the postal zone</p> <p>- base type: string, max length: 10, (XPath: TEXDesRequest/TRbody/TRitem/thirdParty/postCode)</p> |
| shipInfo 0-1 | <p>Shipping informations</p> <p>miscellaneous informations on transport and packing, referred either to the whole document or to the single item</p> <p>- - note: <i>here the infos valid for the single item must be specified</i> (XPath: TEXDesRequest/TRbody/TRitem/shipInfo)</p> |
| transInfo 0-5 | <p>Transport informations</p> <p>details of transport: mode, carrier and delivery place</p> <p>- - note: <i>this data group can be iterated for each transport leg</i> (XPath: TEXDesRequest/TRbody/TRitem/shipInfo/transInfo)</p> |
| @transReason [Optional] | <p>reason for transport code</p> <p>reason for the transport</p> <p>- base type: string, cod. table: NT11, (XPath: TEXDesRequest/TRbody/TRitem/shipInfo/transInfo/@transReason)</p> |
| transMode 1-1 | <p>mode of transport code</p> <p>way of transport, in general or referred to the specified leg</p> <p>- base type: string, cod. table: T8, (XPath: TEXDesRequest/TRbody/TRitem/shipInfo/transInfo/transMode)</p> |
| carrier 0-1 | <p>carrier identifier</p> <p>identification of the transport carrier</p> <p>- base type: string, max length: 40, (XPath: TEXDesRequest/TRbody/TRitem/shipInfo/transInfo/carrier)</p> |

| | |
|--|---|
| deliveryPlace 0-1 | place of delivery name place of delivery of goods, ultimate or related to a given leg - base type: string, max length: 40, (XPath: TEXDesRequest/TRbody/TRitem/shipInfo/transInfo/deliveryPlace) |
| grossWeight 0-1 | gross weight measure the gross weight of the overall goods supply, declared for transport or customs purpose - base type: decimal, min inclusive: 0, fraction digits: 2, (XPath: TEXDesRequest/TRbody/TRitem/shipInfo/transInfo/grossWeight) |
| @um [Required] | unit of measure code specification of the unit of measure - base type: string, cod. table: NT7, (XPath: TEXDesRequest/TRbody/TRitem/shipInfo/transInfo/grossWeight/@um) |
| netWeight 0-1 | net weight measure the net weight of the overall goods supply, declared for transport or customs purpose - base type: decimal, min inclusive: 0, fraction digits: 2, (XPath: TEXDesRequest/TRbody/TRitem/shipInfo/transInfo/netWeight) |
| @um [Required] | unit of measure code specification of the unit of measure - base type: string, cod. table: NT7, (XPath: TEXDesRequest/TRbody/TRitem/shipInfo/transInfo/netWeight/@um) |
| delEffectiveDate 0-1 | goods delivered date effective date of delivery of goods (declared in Despatch) - base type: date, (XPath: TEXDesRequest/TRbody/TRitem/shipInfo/delEffectiveDate) |
| packages 0-5 | Transport packages details details of the transport packages - - note: <i>this data group must be iterated for each type of package</i> (XPath: TEXDesRequest/TRbody/TRitem/shipInfo/packages) |
| @packageReturn [Optional] [Default= 0] | package return indicator specifies if the transport packages have to be returned by the Consignee - base type: boolean, (XPath: TEXDesRequest/TRbody/TRitem/shipInfo/packages/@packageReturn) |
| @packageLevel [Optional] | package level identifier level used to indicate the hierarchical structure of the packages (from outer to inner levels) - base type: positiveInteger, total digits: 1, - nota: <i>the hierarchic indication of the packages stucture must either be used for all packages or not be used</i> (XPath: TEXDesRequest/TRbody/TRitem/shipInfo/packages/@packageLevel) |
| packageText 1-1 | transport package text free text specifying the type of package used for transport and delivery - base type: string, max length: 40, (XPath: TEXDesRequest/TRbody/TRitem/shipInfo/packages/packageText) |
| package 1-1 | transport package code code specifying the type of package used for transport and delivery - base type: string, cod. table: T11, (XPath: TEXDesRequest/TRbody/TRitem/shipInfo/packages/package) |
| packageQty 0-1 | transport package quantity number of the transport packages in the named supply - base type: positiveInteger, min inclusive: 1, max inclusive: 999, - note: <i>total for the type of package</i> |

| | |
|--|--|
| | (XPath: TEXDesRequest/TRbody/TRitem/shipInfo/packages/packageQty) |
| packageN 0-999 | <p>package number serial number used to identify a transport package - base type: string, max length: 15, - note: <i>here the serial no.s of the packages can be identified</i> (XPath: TEXDesRequest/TRbody/TRitem/shipInfo/packages/packageN)</p> |
| @numberingOrg [Optional] [Default= FO] | <p>numbering organisation code Party who has created or owns the coding or numbering system - base type: string, cod. table: NT6, (XPath: TEXDesRequest/TRbody/TRitem/shipInfo/packages/packageN/@numberingOrg)</p> |
| piecePack 0-1 | <p>Fabric piece packing details type of wrapping or packing of the fabric pieces - (XPath: TEXDesRequest/TRbody/TRitem/piecePack)</p> |
| piecePackText 1-1 | <p>fabric piece packing text free text specifying the type of wrapping or packing used for the fabric piece - base type: string, max length: 40, (XPath: TEXDesRequest/TRbody/TRitem/piecePack/piecePackText)</p> |
| pieceInnWrap1 1-1 | <p>fabric piece inner packing 1 code code specifying the type of inner wrapping/packing used for the fabric piece - base type: string, cod. table: T4, (XPath: TEXDesRequest/TRbody/TRitem/piecePack/pieceInnWrap1)</p> |
| pieceInnWrap2 0-1 | <p>fabric piece inner packing 2, code code sub-specifying the type of inner wrapping/packing used for the fabric piece - base type: string, cod. table: T5, (XPath: TEXDesRequest/TRbody/TRitem/piecePack/pieceInnWrap2)</p> |
| pieceOutWrap 0-1 | <p>fabric piece outer packing, code code specifying the type of outer wrapping or packing used for the fabric piece - base type: string, cod. table: T6, (XPath: TEXDesRequest/TRbody/TRitem/piecePack/pieceOutWrap)</p> |
| note 0-1 | <p>free text free text note - base type: string, max length: 350, (XPath: TEXDesRequest/TRbody/TRitem/note)</p> |

4. Enumeration tables

List of enumeration tables used in the XML document. You can find the corresponding codes in the attachment labeled "A", for tables with 100 values or less.

NT9 - Despatch request type

NT18 - message function

T21 - type of document

NT6 - Product coding qualifier

T10 - ISO3166 - Country

NT2 - Third party qualifier

NT11 - Transport causal

T8 - Modes of Transport

NT7 - Unity of measure

T11 - Transport package type

T4 - Fabric piece inner packing (wrapping) 1

T5 - Fabric piece inner packing (wrapping) 2

T6 - Fabric piece outer packing

5. Credits

This guide has been realized for MODA-ML project by Guido Cucchiara, PROGEMA - gruppo SOI, supported by Thomas Imolesi, XML-Lab (initiative from ENEA and Forum per la Tecnologia dell'Informazione).

Other participants:

Alessandro Barberis Canonico (Lanificio Vitale Barberis Canonico),
Albino Botto Poala (Lanificio Successori Reda),
Gustavo Cametti (Lanificio Piacenza, Domina srl),
Piero De Sabbata e Piergiorgio Censoni (ENEA)
Gianfranco Irico (Lanificio Loro Piana),
Luca Mainetti (Politecnico di Milano, Hypermedia Open center),
Federico Tamburini e Ivano Begnozzi (Fratelli Cornelian).

The MODA-ML project is supported in the Fifth Framework programme by the European Commission in the IST initiative and is included in the cluster of projects about Agents and Middleware Technologies EUTIST-AMI (IST-2000-28221, <http://www.eutist-ami.org>).

More informations can be acquired in <http://www.moda-ml.org>.

Attachment A

NT9 - Despatch request type

| | |
|-----|----------|
| CHG | change |
| STD | standard |

NT18 - message function

| | |
|----|-----------------|
| CP | copy |
| OR | original |
| RT | re-transmission |

T21 - type of document

| | |
|-----|----------------------|
| CAT | price catalogue |
| CTR | contract |
| DAD | darn order |
| DDT | ddt |
| DEA | despatch advise |
| DER | despatch request |
| ORD | purchase order |
| OSR | order status request |
| OST | order status |
| OUR | our reference |
| SCL | process sheet |

NT6 - Product coding qualifier

| | |
|----|--------------------|
| CL | Customer/buyer |
| CO | Quality Controller |
| EN | EAN |
| FO | Supplier |
| MF | VAT identifier |

T10 - ISO3166 - Country

Table not printed: there are 239 elements, more than the maximum specified (100) for printing.

NT2 - Third party qualifier

| | |
|----|--------------------|
| AG | Sales Agent |
| CO | Quality Controller |
| DC | Response to |
| DF | Invoicee |
| DM | Consignee |
| IM | Importer |
| SP | Forwarder |

NT11 - Transport causal

| | |
|-----|-------------------|
| DPT | depot |
| LAV | works |
| OMA | free gift |
| RDP | return from depot |
| RLA | return from works |
| RSC | rejection |
| RVI | return from view |
| VEN | sale |
| VIS | view |

T8 - Modes of Transport

| | |
|---|------------------------|
| 1 | MARITIME TRANSPORT |
| 2 | RAIL TRANSPORT |
| 3 | ROAD TRANSPORT |
| 4 | AIR TRANSPORT |
| 5 | MAIL |
| 8 | INLAND WATER TRANSPORT |
| 9 | MODE UNKNOWN |

NT7 - Unity of measure

| | |
|-----|------------|
| CMT | centimetre |
| GRM | gram |
| INH | inch |
| KGM | kilogram |
| LBR | pound |
| MTR | metre |
| NMB | numero |
| ONZ | ounce |
| PZ | piece |
| YRD | yard |

T11 - Transport package type

| | |
|----|--|
| 4A | |
| 4C | |
| 5M | |
| BX | |
| NE | |
| PE | |
| PX | |
| QS | |

| | |
|----|--|
| TU | |
| XD | |
| XK | |

T4 - Fabric piece inner packing (wrapping) 1

| | |
|---|------------------------------------|
| A | Folded, whole width |
| B | Folded, doubled |
| C | Folded, tube products |
| D | Spooled, whole width |
| E | Spooled, doubled, pli: left |
| F | Spooled, doubled, pli: right |
| G | Rolled, whole width, single item |
| H | Rolled, whole width, several items |
| I | Rolled, doubled |
| J | Rolled, tube products |

T5 - Fabric piece inner packing (wrapping) 2

| | |
|---|---|
| A | Open |
| B | Folded once, not looped |
| C | Folded twice, not looped |
| H | Folded once, looped |
| I | Folded twice, looped |
| J | Without inner object, right side inside |
| K | On carton or spooling plank, right side inside |
| L | On spool (for pressure sensitive products), right side inside |
| M | Without inner object, left side inside |
| N | On carton or spooling plank, left side inside |
| O | On spool (for pressure sensitive products), left side inside |
| P | Without inner object, right side inside |
| Q | On carton, right side inside |
| R | On wooden stick, right side inside |
| S | Without inner object, left side inside |
| T | On carton, left side inside |
| U | On wooden stick, left side inside |

T6 - Fabric piece outer packing

| | |
|----|--|
| 0 | Not wrapped |
| 00 | |
| 1 | Totally wrapped |
| 2 | Wrapped, one side open |
| 3 | Wrapped, both sides open |
| 4 | Wrapped, one side open, with show corner |
| 5 | Wrapped in cartons |

| | |
|---|----------------|
| 6 | Double wrapped |
|---|----------------|